



12,780 DWT / 2 x 180 mt



BRIESE SCHIFFAHRT

Vessel name	Built	IMO no.	Flag
BBC Alberta	11/2010	9468102	Liberia
BBC Utah	05/2011	9468114	Liberia

Vessel name	Built	IMO no.	Flag
BBC Oregon	08/2010	9501265	Antigua & Barbuda
BBC Virginia	01/2011	9501277	Antigua & Barbuda

Ship's Basics

Type	Premium Project Carrier Vessel Tweendecker
Builder	Jiangdong Shipyard, China (BBC Oregon, BBC Virginia) Jiangzhou Union Shipbuilding Co Ltd, China (BBC Alberta, BBC Utah)
Classification	GL + 100 A5 E3, G, IW, BWM, + MC E3 AUT SOLAS II – 2, Reg. 19, NS - equipped for carriage of dangerous goods (Class iA Ice strengthening) (GRAB) (IWS); MNS; designed for carriage of containers (BBC Utah)

Dimensions & Main Data

Tonnage GT/NT	9,620 / 4,260
Deadweight (summer)	12,780 mt
Length o.a.	138.50 m
Length p.p.	130.71 m
Beam	21.00 m
Max. draft (summer)	8.00 m
Max. speed	15.0 knots
Service speed	14.1 knots
Consumption at sea	25.0 mt fuel per day
Consumption in port	3.0 mt per day (with crane operations) 2.5 mt per day (without crane operations)
Fuel on ME	RMG 380 / RME 180 / MGO DMA / MDO DMB
Fuel on AE	MGO DMA
Tank capacities	RMG 380 / RME 180 abt. 956 cbm MGO DMA / MDO DMB abt. 150 cbm Ballast abt. 4,945 cbm; Freshwater abt. 131 cbm

Propulsion

Main Engine	MAK 6M43 C, 5,400kW
Aux.-Engines	MAN, 3 x 443 kW MAN, 3 x 532 kW (BBC Oregon, BBC Virginia)
Propeller	Controllable pitch propeller

Hold and Hatch

Hold and Hatch	3 Holds / 3 Hatches
Hatch cover type	Folding type
Cargo hold capacity	15,952 cbm (563,340 cbft)
Floor space under deck	2,810 sqm (30,247 sqft)
Floor space on deck	1,480 sqm (15,931 sqft)
Deck strengths per sqm	16.00 mt on tanktop 2.50 mt on td in hold 1 and hold 2 (upper position) 4.00 mt on td in hold 2 (middle and lower position) and hold 3 1.75 mt on hatchcovers Hold No. 3: 1.75 mt on hatch covers
Tweendeck	Hold 1+3: 1 height Hold 2: 3 heights
Bulkheads	3 bh / 3 positions 2 bh / 2 positions (BBC Utah)

Cargo Gear

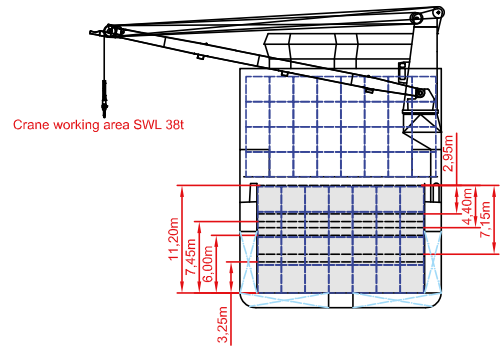
Type	2 x 180 mt
Combinable	360 mt
Situated	Portside

Container Capacity

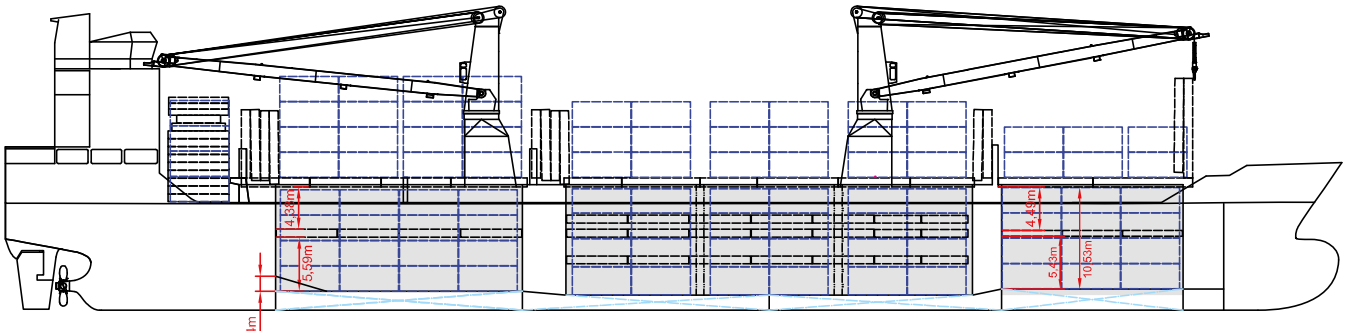
Capacity	20' or 40' + 20'
Hold	334 / 158 / 22
Deck	331 / 136 / 59
Total	665 / 294 / 81
TEU at 14 mt	534
Reeferplugs	50
Stackload	20' / 40'
Hold	90 mt / 120 mt
Deck	60 mt / 80 mt – outer row 50 mt / 65 mt – inner row
Specials	Equipped for wide bodies Equipped for wide bodies (2.60 m), high cubes (9'6") and 45' containers

Special Equipment / Features

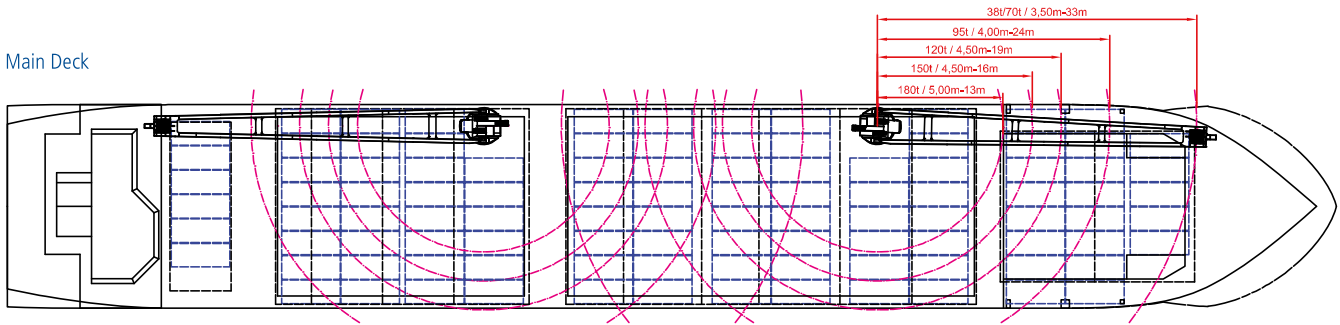
- IMO classes** Fitted for carriage of dangerous goods of all IMO classes
All cargo holds are CO 2 fitted
- Other** Bow thruster; Shaft generator



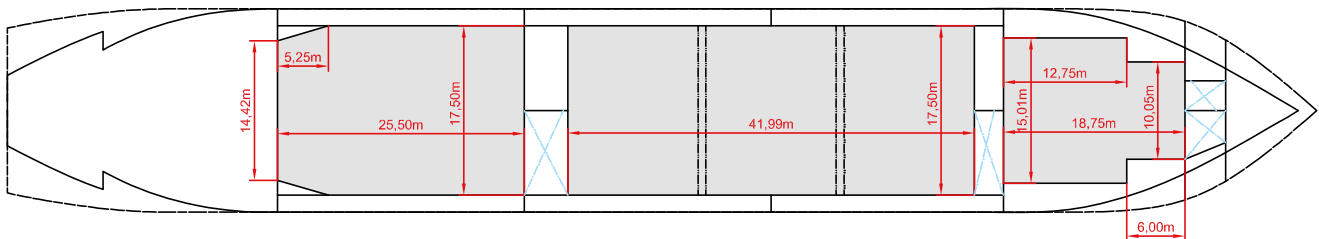
Side View



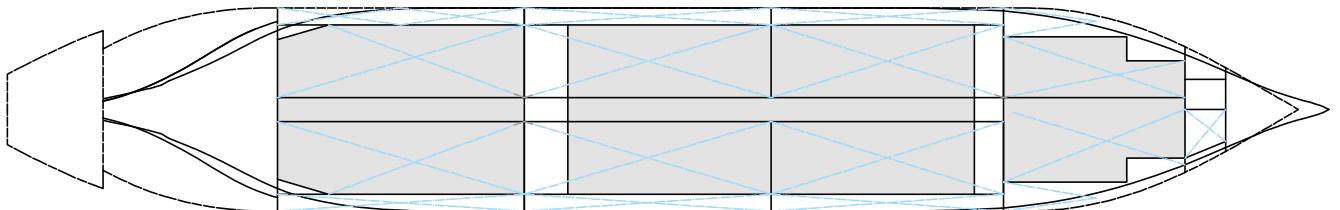
Main Deck



Tweendeck



Hold's & Double Bottom



Max. speed is calculated basis 85% MCR, ballast condition, no deck cargo, maximum Beaufort 2, no swell, no adverse currents, clean hull and even keel. Service Speed and consumption at sea is calculated basis 75% MCR, laden condition, no deck cargo, maximum Beaufort 2, no swell, no adverse currents, clean hull and even keel. Eco speed is the minimum continuous speed in laden condition. Consumption data assumes reefer plugs and shaft generator disconnected but including AE if no shaft generator is installed. Vessel is burning fuel according to ISO 8217. Intake is always subject to vessel's stability, trim, permissible weights and is subject to regulations of visibility. Lifting capacity of vessel's cranes is subject to vessel's stability and can depend on cargo/ ballast on board. Container data as well as bale capacity assumes tweendeck ashore. All details including speed and consumption are given in good faith and are "about" and are given without guarantee. They must not be used as basis for charterparties or contracts without owner's explicit written authority.