



## Multipurpose Vessel Tweendecker

### 6.300 DWT / 2 x 60 to

#### MV "BBC Atlantic"



#### Ship's Basics

Builder	Xingang Shipyard, Tianjin / China
Delivery	MV "BBC Atlantic" 07/2005
Type	Multipurpose Cargo Vessel
Classification	GL + 100 A5 E3 G + MC E3 AUT

#### Dimensions & Main Data

Tonnage	abt. 5.261 GT / 2.382 NT
Deadweight	abt. 6.300 mt
Length o.a.	abt. 115,50 m
Length p.p.	abt. 111,63 m
Beam	abt. 16,50 m
Draft	abt. 5,70 m
Height above keel	abt. 29,40 m
Speed	abt. 13,0 kn
Consumption per day at sea	abt. 14,50 mt IFO 180 RME 25 at 85 % MCR
at port	abt. 1,5 mt MGO DMA

#### Tank capacities

IFO	abt. 300,00 cbm
GO	abt. 90,00 cbm
Ballast	abt. 2.760,00 cbm
Freshwater	abt. 54,80 cbm

#### Engines

Main Engine	MaK 8M32, 3.840 kW at 600 rpm
Aux.-Engines	2 x generator sets, abt. 260 kW
Shaft generator	1 x 400 kW
Emergency	1 x 100 kW
Bowthruster	1 x 350 kW, fixed propeller, 3 steps

#### Specials

Controllable pitch propeller  
Freshwater generator

#### Nautical Equipment / Communication

Fitted with all modern equipment / fully GMDSS fitted

#### Accommodation

12 persons, 10 cabins

#### Hatch and Hold Number

2 Holds / 2 Hatches

#### Hatch cover type

12 panels lift away covers of pontoon type / hydraulic operated gantry crane

#### Hold dimensions

No. 1 abt. 19,72 m x 13,50 m x 09,05 m, boxshaped  
No. 2 abt. 57,80 m x 13,50 m x 09,05 m, boxshaped

#### Hatch dimensions

No. 1 abt. 19,72 m x 13,50 m  
No. 2 abt. 57,80 m x 13,50 m

#### Grain / Bale Space

No. 1 abt. 2.373 cbm (83.801 cbft)  
No. 2 abt. 6.956 cbm (245.648 cbft) Total: 329450 cbft

#### IMO Classes

all, except 1.1-1.6 and 5.2 in hold

#### Hold ventilation

6 airchanges per hour

#### Strength

On tanktop	abt. 15,00 mt/sqm
On tweendeck	on hold no. 1 abt. 2,20 mt/sqm on hold no. 2 abt. 2,50 mt/sqm
On deck	abt. 1,75 mt/sqm



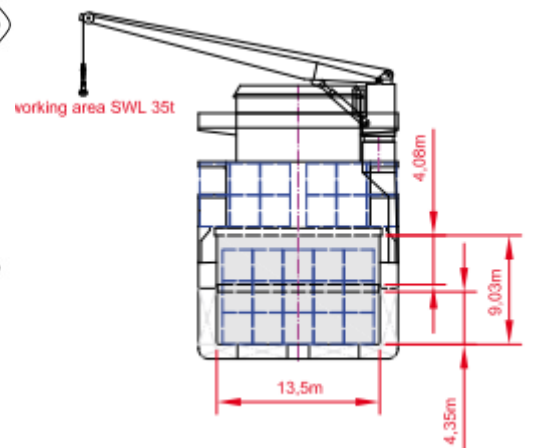
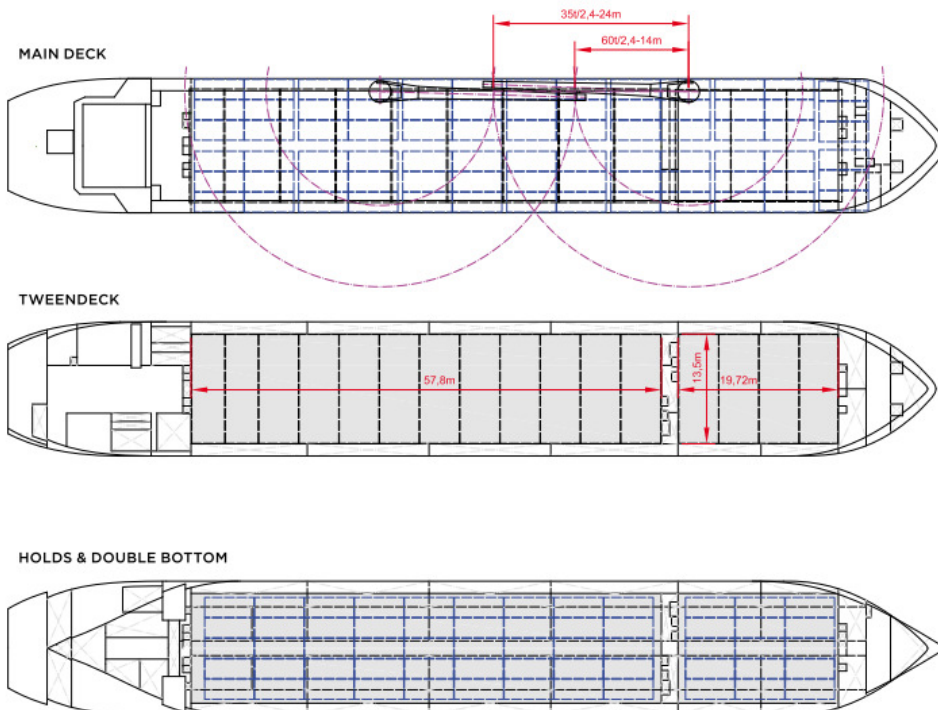
# BRIESE SCHIFFFAHRT

Our Objective: Charterer's Happiness

Hafenstraße 12 • 26789 Leer • Germany / Tel.: +49 491 92520 0 • Fax: +49 491 92520 25 • info@briese.de

Tweendeck	one complete		
Bulkhead	2 pcs in hold no. 2, movable		
<b>Container Capacity</b>	20'	40'	20'
Hold	180	75	30
Deck	156	78	0
Total	336	153	30
TEU at 14 to	330		
Specials	Fitted for the carriage of solid bulks, grains and dangerous goods		

Stackload	20'	40'
Hold	75 mt	100 mt
Deck	35 mt	45 mt
<b>Cargo Gear Type</b>	2 x 60 mt NMF	
SWL	60 mt / 14 m; 35 mt / 24 m	
Combinable	120 mt	
Situated	portside	



All details believed to be correct but given without guarantee and they must not be used as basis for charterparties or contracts without owner's explicit written authority.