



56,800 DWT / 4 x 36 mt



BRIESE SCHIFFFAHRT

Vessel name	Built	IMO no.	Flag
Daxia	06/2011	9588598	Liberia

Ship's Basics

Type	Bulk Carrier Singledecker
Builder	Cosco Shipyard, Dalian, China
Classification	NK NS* (CSR, Bulk Carrier type A; BCXII, GRAB 20) (ESP),(IWS)MNS*

Dimensions & Main Data

GT/NT	32,983 / 19,191
Deadweight (summer)	56,800 mt
Length o.a.	189.99 m
Length p.p.	185.00 m
Beam	32.26 m
Max. draft (summer)	12.80 m
Max. speed	13.5 knots
Service speed	13.0 knots
Consumption at sea	27.5 mt fuel per day + 2.5 mt AE
Eco speed	12.0 knots
Consumption eco speed	24.5 mt fuel per day + 2.5 mt AE
Consumption in port	5.5 mt fuel per day (with cranes operations) 3.0 mt fuel per day (without cranes operations)
Fuel on ME	RMG 380 / RME 180 / MGO DMA / MDO DMB
Fuel on AE	MGO DMA
Tank capacities	RMG 380 / RME 180 abt. 2,059 cbm MGO DMA / MDO DMB abt. 346 cbm Ballast abt. 30,886 cbm Freshwater abt. 465,4 cbm

Propulsion

Main Engine	MAN B&W 6S50MC-C MARK VI 9480 kW
Aux.-Engines	Daihatsu, 3 x 660kW
Propeller	Fixed pitch propeller

Hatch and Hold

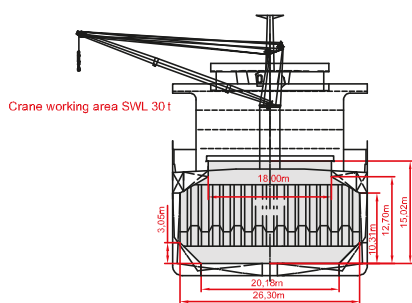
Hatch and Hold	5 Holds / 5 Hatches
Cargo Hold capacity	No 1: 13,009 cbm (459,407 cbft) No 2: 15,333 cbm (541,478 cbft) No 3: 14,553 cbm (513,933 cbft) No 4: 15,333 cbm (541,478 cbft) No 5: 13,404 cbm (473,356 cbft) Total: 71,634 cbm (2529,726 cbft)
Hatch cover type	Folding type
Hold dimensions	28.10 m x (F 11.2 + A 23.74) m
Deck strengths	per sqm Hold No. 1,3,5: 25.00 mt on tanktop Hold No. 2,4: 20.00 mt

Cargo Gear

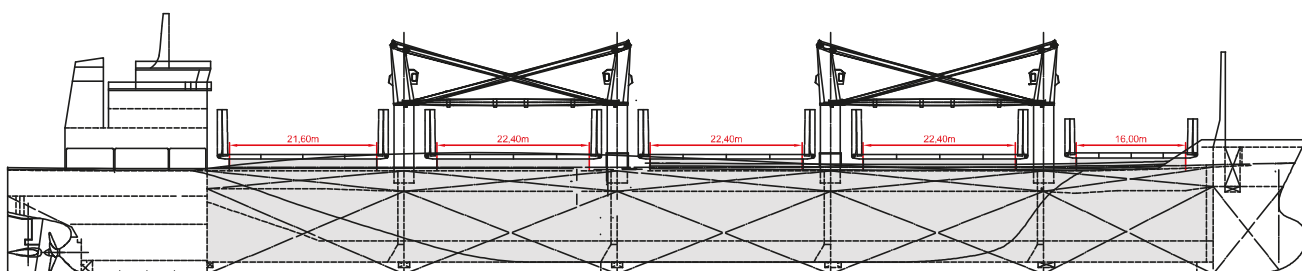
Type	4 x 36 mt
Hoisting speed	30 mt x 18.00 m/min
Slewing angle	360°
Hoisting height	35 mt at min. radius
Situated	Between hatches in centreline of the ship
Specials	Could also be equipped with grabs Hold CO2 fitted

Special Equipment / Features

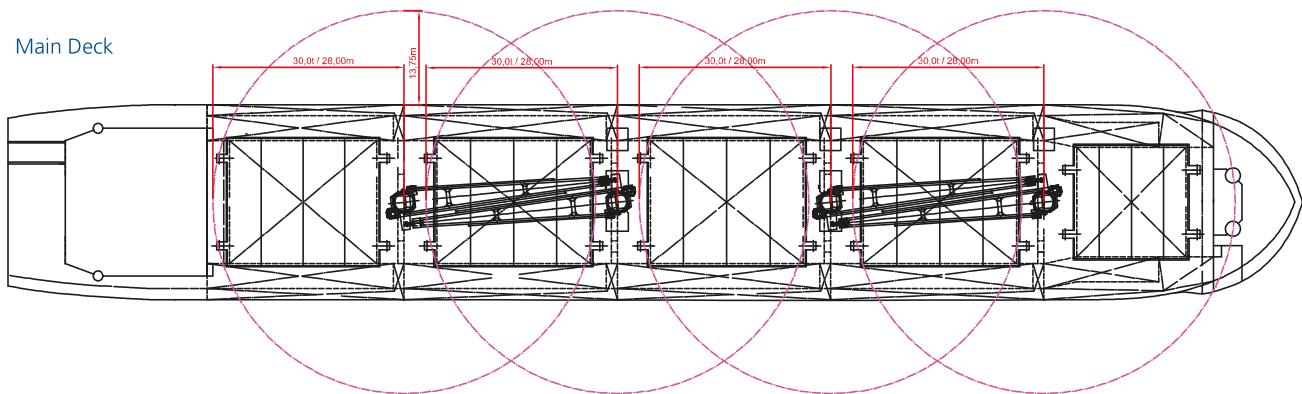
IMO classes	Fitted for carriage of dangerous goods of all IMO classes
Other	-



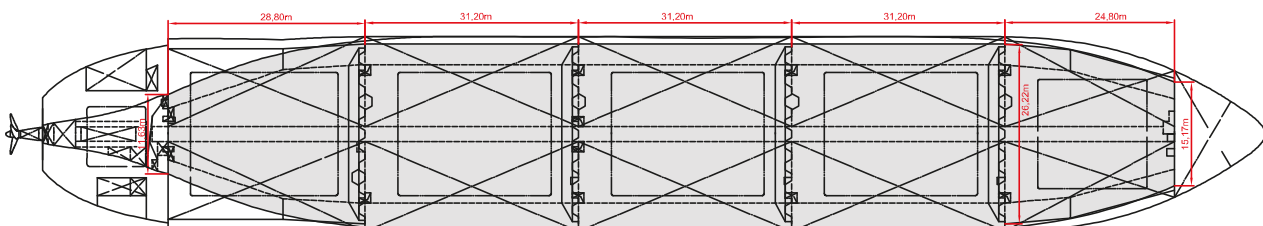
Side View



Main Deck



Holds & Double Bottom



Max. speed is calculated basis 85% MCR, ballast condition, no deck cargo, maximum Beaufort 2, no swell, no adverse currents, clean hull and even keel. Service Speed and consumption at sea is calculated basis 75% MCR, laden condition, no deck cargo, maximum Beaufort 2, no swell, no adverse currents, clean hull and even keel. Eco speed is the minimum continuous speed in laden condition. Consumption data assumes reefer plugs and shaft generator disconnected but including AE if no shaft generator is installed. Vessel is burning fuel according to ISO 8217. Intake is always subject to vessel's stability, trim, permissible weights and is subject to regulations of visibility. Lifting capacity of vessel's cranes is subject to vessel's stability and can depend on cargo/ballast on board. Container data as well as bale capacity assumes tweendeck ashore. All details including speed and consumption are given in good faith and are "about" and are given without guarantee. They must not be used as basis for charterparties or contracts without owner's explicit written authority.