



## 17,500 DWT / 3 x 80 mt



## BRIESE SCHIFFFAHRT

Vessel name	Built	IMO no.	Flag
BBC Elbe	10/2006	9347059	Antigua & Barbuda
Kurt Paul	05/2009	9435856	Antigua & Barbuda
BBC Hudson	08/2009	9435868	Antigua & Barbuda
BBC Weser	08/2006	9347047	Antigua & Barbuda

Vessel name	Built	IMO no.	Flag
BBC Mississippi	12/2006	9347061	Antigua & Barbuda
Sjard	09/2007	9303314	Antigua & Barbuda
BBC Volga	10/2009	9436329	Antigua & Barbuda

### Ship's Basics

<b>Type</b>	Project Carrier Vessel Tweendecker
<b>Builder</b>	Tianjin Xingang Shipyard, China
<b>Classification</b>	GL+100 A5 E3 G, MC, E3 AUT, EP-D, IW (BBC Ems, BBC Elbe, Kurt Paul, BBC Weser, BBC Mississippi, BBC Volga, BBC Hudson), DBC, CM-PS (BBC Amazon), TMON (Sjard), strengthened for Heavy Cargo, equipped for carriage of containers, equipped for the carriage of dangerous goods, according to SOLAS II-2, Reg. 19

### Dimensions & Main Data

<b>Tonnage GT/NT</b>	12,936 / 5,824
<b>Deadweight (summer)</b>	17,500 mt
<b>Length o.a.</b>	143.14 m
<b>Length p.p.</b>	134.43 m
<b>Beam</b>	22.80 m
<b>Max. draft (summer)</b>	9.70 m
<b>Max. speed</b>	16.3 knots
<b>Service speed</b>	14.6 knots
<b>Consumption at sea</b>	23.2 mt fuel per day + 2.2 mt AE
<b>Eco speed</b>	13.0 knots
<b>Consumption eco speed</b>	17.5 mt fuel per day + 2.2 mt AE
<b>Consumption in port</b>	3.0 mt fuel per day (with crane operations) 1.5 mt fuel per day (without crane operations)
<b>Fuel on ME</b>	RMG 380 / RME 180 / MGO DMA / MDO DMB
<b>Fuel on AE</b>	MGO DMA
<b>Tank capacities</b>	RMG 380 / RME 180 abt. 1,526 cbm MGO DMA / MDO DMB abt. 145 cbm Ballast abt. 5,670 cbm Freshwater abt. 335 cbm

### Propulsion

<b>Main Engine</b>	MAN B&W 6S46MC-C, 7,074 kW
<b>Aux.-Engines</b>	Yanmar, 3 x 660 kW
<b>Propeller</b>	Fixed pitch propeller

### Hold and Hatch

<b>Hold and Hatch</b>	3 Holds / 3 Hatches
<b>Hatch cover type</b>	Folding type
<b>Cargo hold capacity</b>	21,697 cbm (766,222 cbft)
<b>Floor space under deck</b>	3,184 sqm (34,276 sqft)
<b>Floor space on deck</b>	1,480 sqm (15,930 sqft)
<b>Deck strengths per sqm</b>	20.00 mt on tanktop 4.70 mt on tweendeck 2.20 mt on deck
<b>Tweendeck</b>	Hold 1: 1 height Hold 2: 2 heights
<b>Bulkheads</b>	3 bh / 4 positions (Sjard + BBC Hudson) 2 bh / 2 positions (others)

### Cargo Gear

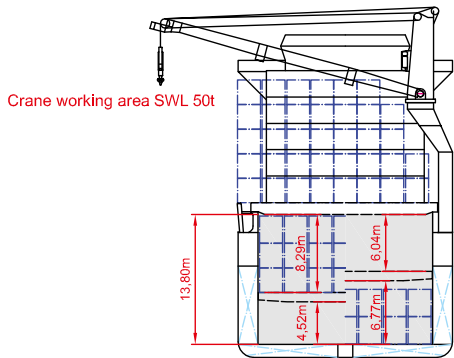
<b>Type</b>	3 x 80 mt NMF
<b>Combinable</b>	160 mt
<b>Situated</b>	Portside

### Container Capacity

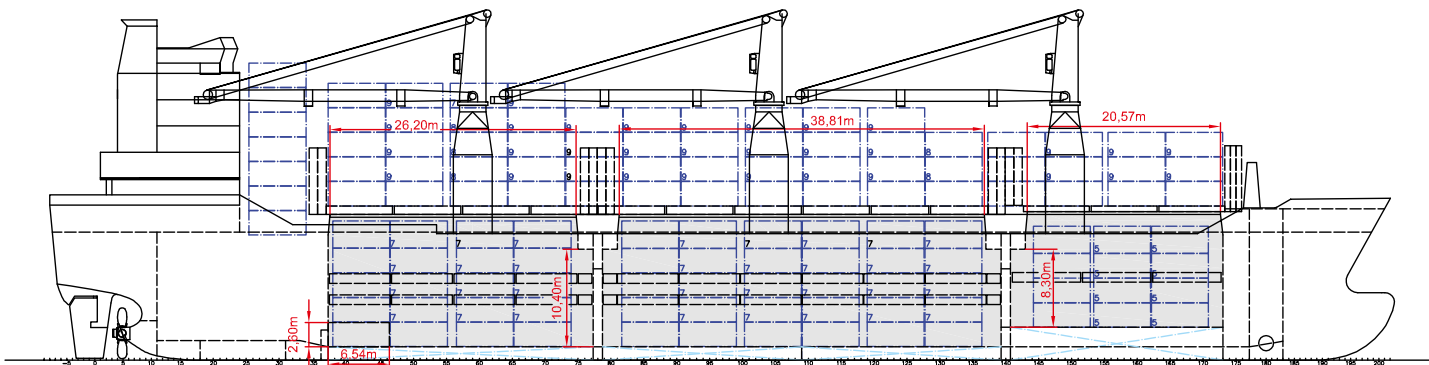
<b>Capacity</b>	20' or 40' + 20'
<b>Hold</b>	408 / 193 / 22
<b>Deck</b>	550 / 225 / 100
<b>Total</b>	958 / 418 / 122
<b>TEU at 14 mt</b>	617
<b>Reeferplugs</b>	64
<b>Stackload</b>	20' / 40'
<b>Hold</b>	125 mt / 175 mt
<b>Tw'd</b>	45 mt / 60 mt
<b>Deck</b>	60 mt / 90 mt
<b>Specials</b>	Additionally equipped for 30' cont. wide body and high cube cont.

### Special Equipment / Features

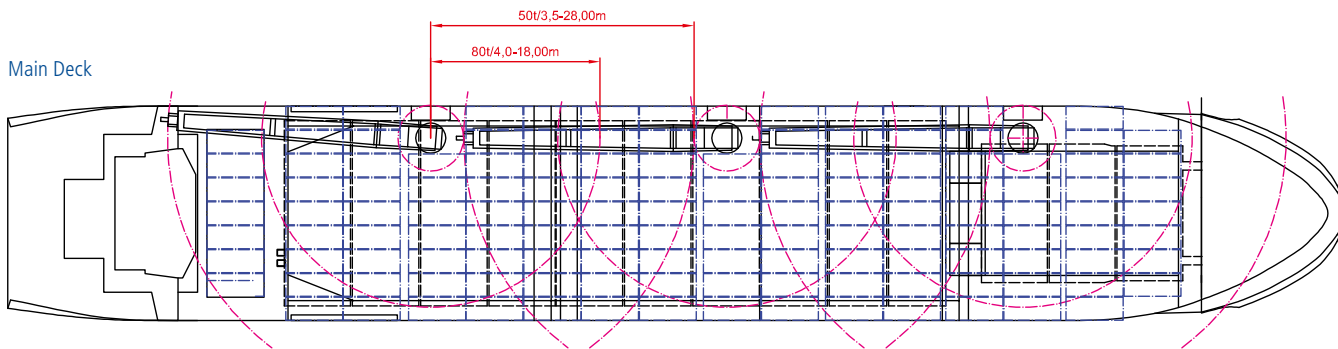
<b>IMO classes</b>	Fitted for carriage of dangerous goods of all IMO classes
<b>Other</b>	Bow thruster



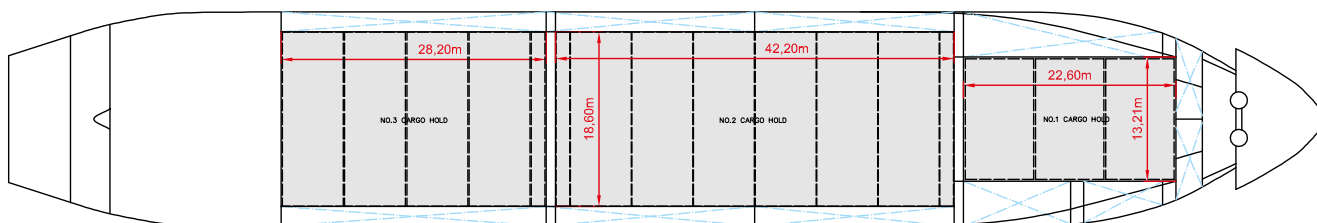
Side View



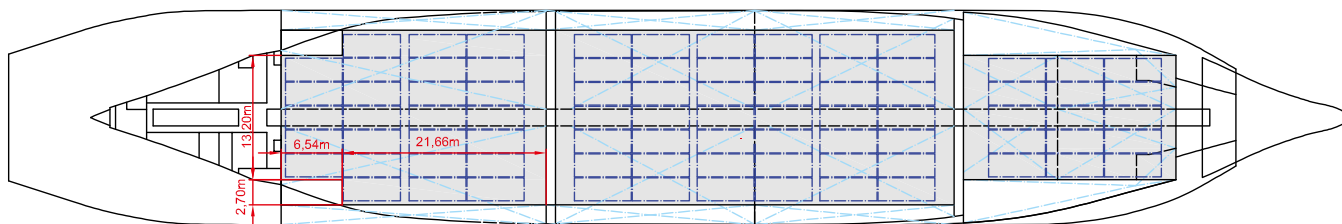
Main Deck



Tweendeck



Hold & Double Bottom



Max. speed is calculated basis 85% MCR, ballast condition, no deck cargo, maximum Beaufort 2, no swell, no adverse currents, clean hull and even keel. Service Speed and consumption at sea is calculated basis 75% MCR, laden condition, no deck cargo, maximum Beaufort 2, no swell, no adverse currents, clean hull and even keel. Eco speed is the minimum continuous speed in laden condition. Consumption data assumes reefer plugs and shaft generator disconnected but including AE if no shaft generator is installed. Vessel is burning fuel according to ISO 8217. Intake is always subject to vessel's stability, trim, permissible weights and is subject to regulations of visibility. Lifting capacity of vessel's cranes is subject to vessel's stability and can depend on cargo/ ballast on board. Container data as well as bale capacity assumes tweendeck ashore. All details including speed and consumption are given in good faith and are "about" and are given without guarantee. They must not be used as basis for charterparties or contracts without owner's explicit written authority.