



6,500 DWT / gearless



BRIESE SCHIFFFAHRT

Vessel name	Built	IMO no.	Flag
Amke	10/2006	9374387	Madeira
Ameland	03/2009	9434761	Antigua & Barbuda

Vessel name	Built	IMO no.	Flag
Emma Janneke	07/2006	9363508	Gibraltar
Ostermarsch	10/2008	9434759	Antigua & Barbuda

Ship's Basics

Type	General Cargo Vessel Tweendecker
Builder	Taizhou Sanfu Ship Eng., China (Amke, Emma Janneke) Dalian Fishing Vessel Co., China (Ameland, Ostermarsch)
Classification	DNV-GI; 100 A5 E3 + MC E3 AUT EP GBWM SOLAS-II-2, Reg. 19DBL; equipped for carriage of container, strengthened for heavy cargo

Dimensions & Main Data

Tonnage GT/NT	5,313 / 2,382
Deadweight (summer)	6,500 mt
Length o.a.	115.50 m
Length p.p.	111.63 m
Beam	16.50 m
Max. draft (summer)	5.70 m
Max. speed	13.5 knots
Service speed	12.1 knots
Consumption at sea	13.4 mt fuel per day
Consumption in port	1.2 mt fuel per day
Fuel on ME	RME 180 / MGO DMA / MDO DMB
Fuel on AE	MGO DMA
Tank capacities	RME 180 abt. 310 cbm (Emma Janneke, Amke) RME 180 abt. 381 cbm (Ameland, Ostermarsch) MGO DMA / MDO DMB abt. 84 cbm Ballast abt. 2,710 cbm (Emma Janneke, Amke) Ballast abt. 2,645 cbm (Ameland, Ostermarsch) Freshwater abt. 52.5 cbm

Propulsion

Main Engine	MaK 8M32C, 3840 kW
Aux.-Engines	MAN, 2 x 345 kW
Propeller	Controllable pitch propeller

Hold and Hatch

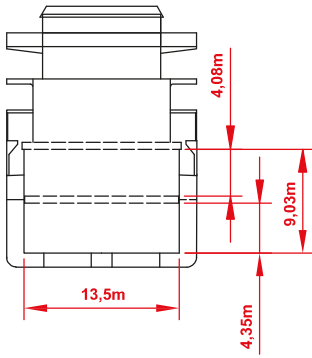
Hold and Hatch	2 Holds / 2 Hatches
Hatch cover type	Pontoon type
Cargo hold capacity	No 1: 2,373 cbm (83,802 cbft) No 2: 6,956 cbm (245,648 cbft) Total: 9,329 cbm (329,450 cbft)
Floor space under deck	2,093 sqm (22,529 sqft)
Floor space on deck	1,046 sqm (11,259 sqft)
Deck strengths per sqm	15.00 mt on tanktop Hold No. 1: 2.20 mt on tweendeck Hold No. 2: 2.50 mt on tweendeck 1.75 mt on deck
Tweendeck Bulkheads	1 height 2 bh / 2 positions

Container Capacity

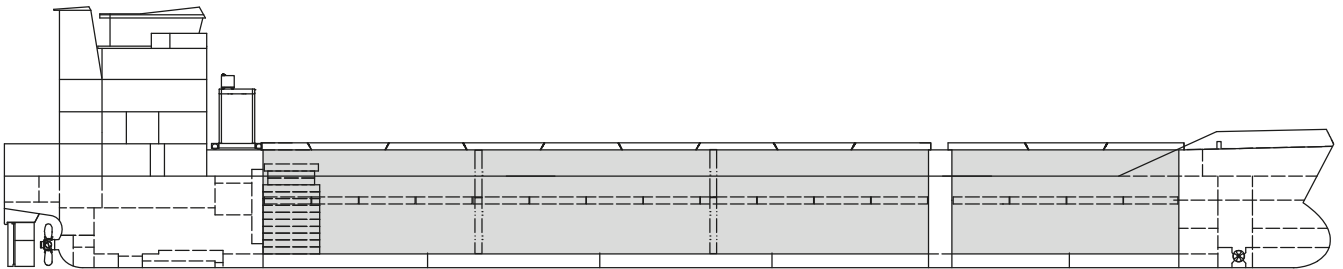
Capacity	20' or 40' + 20'
Hold	180 / 75 / 30
Deck	156 / 72 / 12
Total	336 / 147 / 42
TEU at 14 to	326
Reeferplugs	No
Stackload	20' or 40'
Tanktop	72 mt / 100 mt
Deck	35 mt / 45 mt

Special Equipment / Features

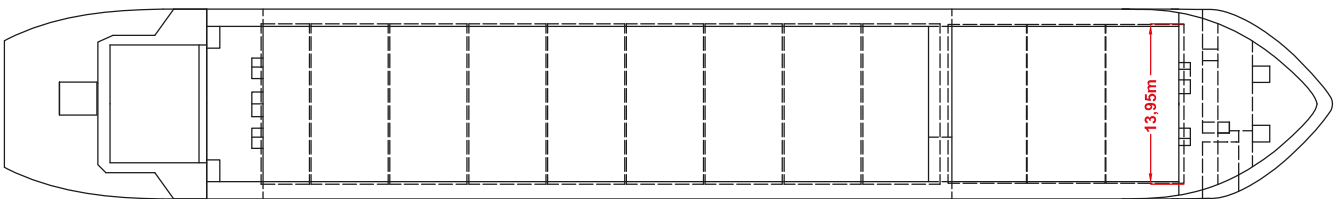
IMO classes	Fitted for carriage of dangerous goods of all IMO classes
Other	Live fuel monitoring (Amke, Emma Janneke) Freshwater generator Bow thruster; Shaft Generator



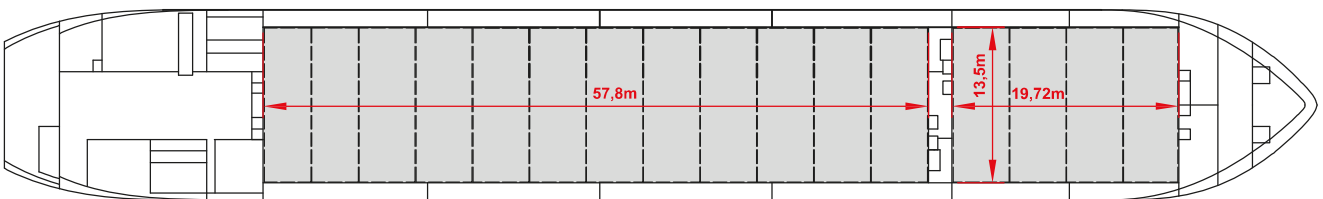
Side View



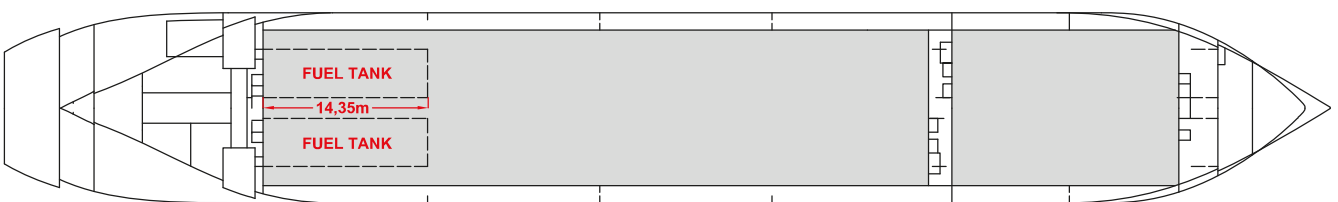
Main Deck



Tweendeck



Hold & Double Bottom



Max. speed is calculated basis 85% MCR, ballast condition, no deck cargo, maximum Beaufort 2, no swell, no adverse currents, clean hull and even keel. Service Speed and consumption at sea is calculated basis 75% MCR, laden condition, no deck cargo, maximum Beaufort 2, no swell, no adverse currents, clean hull and even keel. Eco speed is the minimum continuous speed in laden condition. Consumption data assumes reefer plugs and shaft generator disconnected but including AE if no shaft generator is installed. Vessel is burning fuel according to ISO 8217. Intake is always subject to vessel's stability, trim, permissible weights and is subject to regulations of visibility. Lifting capacity of vessel's cranes is subject to vessel's stability and can depend on cargo/ballast on board. Container data as well as bale capacity assumes tweendeck ashore. All details including speed and consumption are given in good faith and are "about" and are given without guarantee. They must not be used as basis for charterparties or contracts without owner's explicit written authority.