



Multipurpose Vessel Tweendecker

4.900 DWT / 2 x 80 to

MV "BBC Shanghai"
MV "BBC Scotland"



Ship's Basics

Builder	Xingang Shipyard, Tianjin / China	
Delivery	MV "BBC Shanghai"	12/2001
	MV "BBC Scotland"	08/2002
Type	Multipurpose Cargo Ship	
Classification	GL + 100 A5 E3 G + MC E3 AUT	

equipped for carriage of containers, grain fitted, strengthened for heavy cargoes, SOLAS II - 2 Reg. 54, Great Lakes fitted

Dimensions & Main Data

Tonnage	abt. 4.090 GT / 2.016 NT	
Deadweight	abt. 4.900 mt	
Length o.a.	abt. 100,60 m	
Length p.p.	abt. 94,15 m	
Beam	abt. 16,80 m	
Draft	abt. 6,40 m	
Height above keel	abt. 37,30 m	
Speed	abt. 15,0 kn always subject good weather conditions / bf 2 / no swell	
Consumption per day at sea	abt. 15,50 mt IFO 380 RMG 35	
at port	abt. 2,0 mt MGO DMA with crane operations	
	abt. 1,5 mt MGO DMA without crane operations	
Tank capacities IFO	abt. 490,50 cbm	
MDO	abt. 140,90 cbm	
Ballast	abt. 1.801,00 cbm	
Freshwater	abt. 84,90 cbm	

Engines

Main Engine	MAN 9L 32/40, 3.960 kW at 750 rpm
Aux.-Engines	2 x MAN D2842 LE, 399 kW
Emergency gen.	1 x MAN 282 kW
Shaft generator	1 x 800 kW
Bowthruster	350 kW
Specials	Freshwater generator abt. 7 mt/day
Nautical Equipment / Communication	Fitted with all modern equipment / fully GMDSS fitted
Accommodation	15 persons, 13 cabins
Hatch and Hold Number	1 Hold / 1 Hatch
Hatch cover type	Kvaerner folding type / 8 segments (4/4), disconnectable for vertical lifting
Hold	57,85 m x 13,40 m x 8,92 m, boxshaped
Hatch	57,85 m x 13,40 m (775,19 sqm)
Grain / Bale Space	abt. 6.836 cbm (241.411 cft)
IMO classes	all, but not 5.2 in hold
Ventilation	20 airchanges per hour
Strength On tanktop	abt. 17,90 mt/sqmon
On tdw	abt. 2,50 mt/sqm
On deck	abt. 2,50 mt/sqm
Tweendeck	one complete, 57,80 m x 13,40 m



BRIESE SCHIFFFAHRT

Our Objective: Charterer's Happiness

Hafenstraße 12 • 26789 Leer • Germany / Tel.: +49 491 92520 0 • Fax: +49 491 92520 25 • info@briese.de

Bulkhead

2 pcs, movable, can be placed in 7 positions. Tweendeck pontons can be used as bulkheads.

Container Capacity

	20'	40'	20'
Hold	127	56	4
Deck	263	122	14
Total	390	178	18
TEU at 14 to	220		
Reeferplugs	30 on deck		

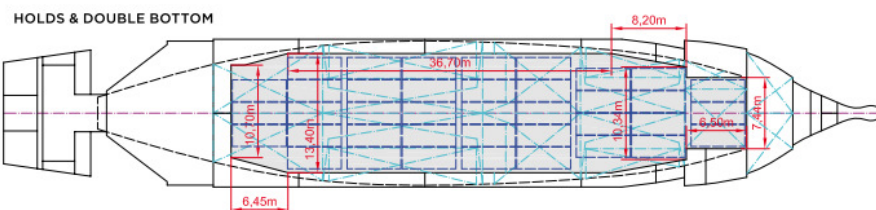
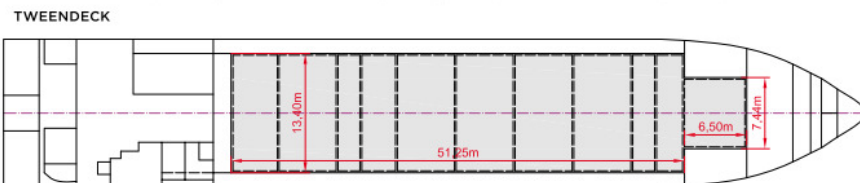
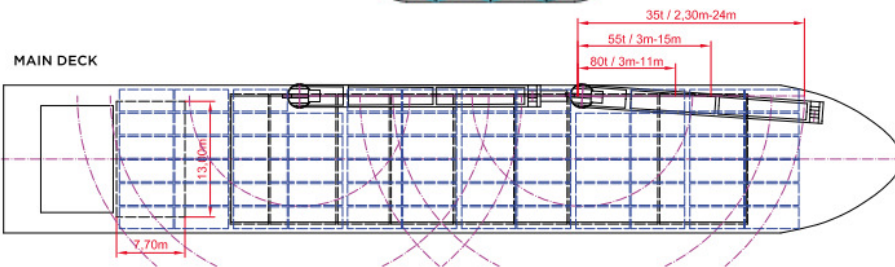
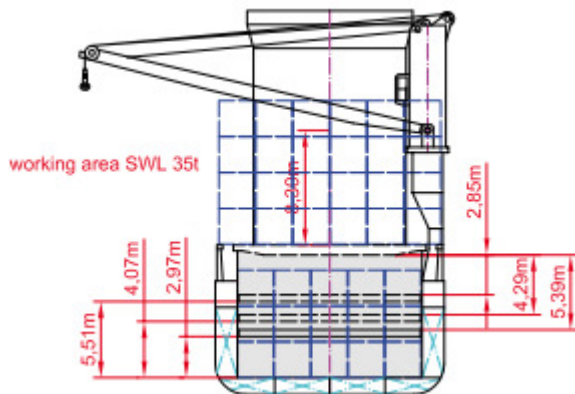
Stackload
Hold
Deck

20'	40'
90 mt	90 mt
40 mt	50 mt

equipped for wide bodies (2,60 m), high cubes (9'6") and 24'/45'/48' cont.

Cargo Gear

Type	2 x NMF
SWL	each 80 mt / 3,00 - 11,00 m; 55 mt / 3,00 - 15,00 m; 35 mt / 2,3 - 25,00 m
Combinable	160 mt
Situated	portside



All details believed to be correct but given without guarantee and they must not be used as basis for charterparties or contracts without owner's explicit written authority.