



## 4,672 DWT / gearless



**BRIESE SCHIFFFAHRT**

Vessel name	Built	IMO no.	Flag
Adiante	02/2009	9360477	Madeira

### Ship's Basics

<b>Type</b>	General Cargo Vessel Singledecker
<b>Builder</b>	Factoria Naval de Marin, S.A, Marin, Spain
<b>Classification</b>	DNV GL + 100 A5 IW/DBC + MC AUT strengthened for heavy cargo, equipped for carriage of containers

### Dimensions & Main Data

<b>Tonnage GT/NT</b>	2,956 / 1,558
<b>Deadweight (summer)</b>	4,672 mt
<b>Length o.a.</b>	89.50 m
<b>Length p.p.</b>	83.40 m
<b>Beam</b>	13.70 m
<b>Max. draft (summer)</b>	6.00 m
<b>Max. speed</b>	12.2 knots
<b>Service speed</b>	10.5 knots
<b>Consumption at sea</b>	7.0 mt fuel per day
<b>Consumption in port</b>	0.5 mt fuel per day
<b>Fuel on ME</b>	RME 180 / MGO DMA / MDO DMB
<b>Fuel on AE</b>	MGO DMA
<b>Tank capacities</b>	RME 180 abt. 254 cbm MGO DMA / MDO DMB abt. 32 cbm Ballast abt. 1,793 cbm Freshwater abt. 55 cbm

### Propulsion

<b>Main Engine</b>	MaK 6M25, 1850 kW
<b>Aux.-Engines</b>	Caterpillar, 2 x 229 kW
<b>Propeller</b>	Controllable pitch propeller

### Hold and Hatch

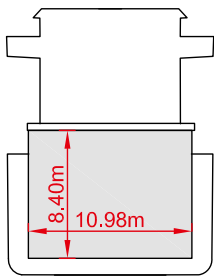
<b>Hold and Hatch</b>	1 Hold / 1 Hatch
<b>Hatch cover type</b>	Pontoon type
<b>Cargo hold capacity</b>	5,615 cbm (198,292 cbft)
<b>Floor space under deck</b>	662 sqm (7152,71 sqft)
<b>Floor space on deck</b>	679 sqm (7308,70 sqft)
<b>Cargo hold capacity</b>	5,615 cbm (198,292 cbft)
<b>Deck strengths per sqm</b>	12.00 mt on tanktop 3.20 mt on deck
<b>Tweendeck</b>	n / a
<b>Bulkheads</b>	2 bh / 7 positions

### Container Capacity

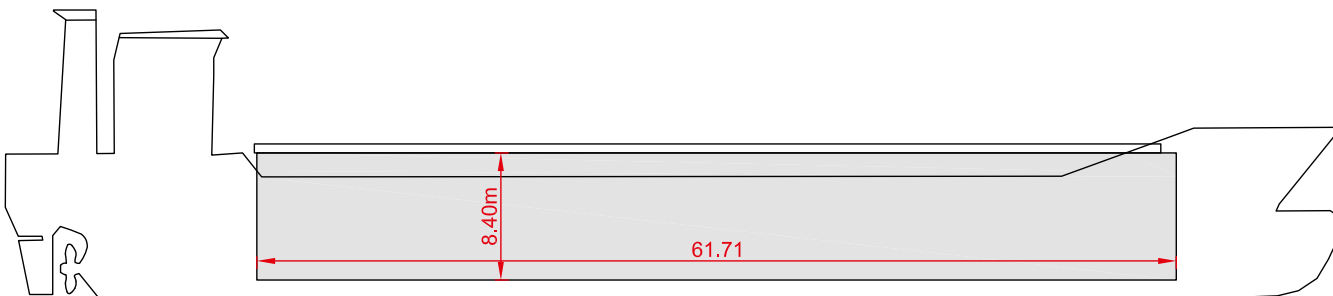
<b>Capacity</b>	20' or 40' + 20'
<b>Hold</b>	111 / 48 / 15
<b>Deck</b>	No fittings on deck for containers
<b>Total</b>	111 / 48 / 15
<b>TEU at 14 mt</b>	111
<b>Reeferplugs</b>	No
<b>Stackload</b>	20' / 40'
<b>Tanktop</b>	72 mt / 91.5 mt
<b>Deck</b>	No fittings on deck for containers

### Special Equipment / Features

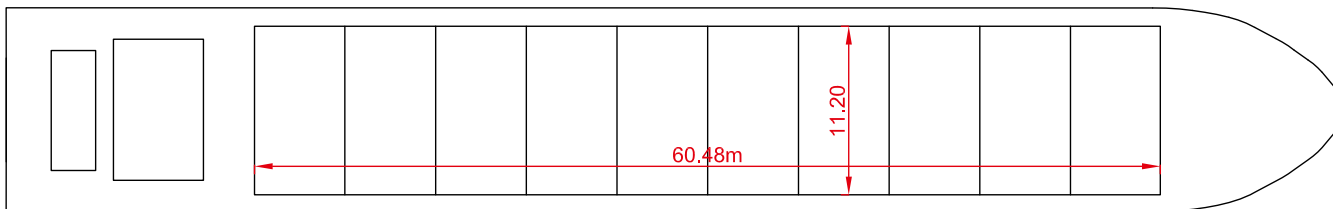
<b>IMO classes</b>	Not fitted for carrying of IMO cargo
<b>Other</b>	Bow thruster; Shaft generator



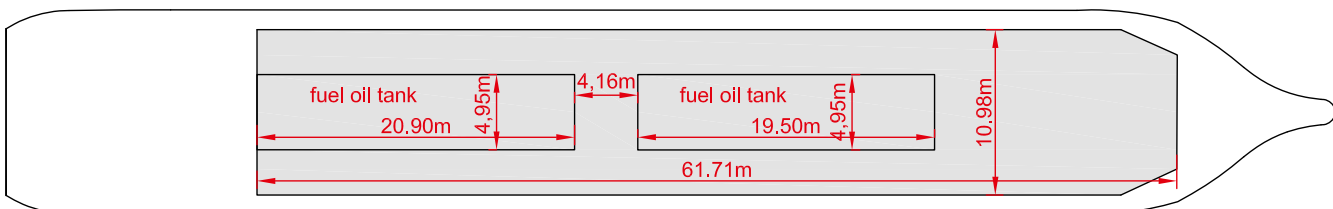
Side View



Main Deck



Hold & Double Bottom



Max. speed is calculated basis 85% MCR, ballast condition, no deck cargo, maximum Beaufort 2, no swell, no adverse currents, clean hull and even keel. Service Speed and consumption at sea is calculated basis 75% MCR, laden condition, no deck cargo, maximum Beaufort 2, no swell, no adverse currents, clean hull and even keel. Eco speed is the minimum continuous speed in laden condition. Consumption data assumes reefer plugs and shaft generator disconnected but including AE if no shaft generator is installed. Vessel is burning fuel according to ISO 8217. Intake is always subject to vessel's stability, trim, permissible weights and is subject to regulations of visibility. Lifting capacity of vessel's cranes is subject to vessel's stability and can depend on cargo/ ballast on board. Container data as well as bale capacity assumes tweendeck ashore. All details including speed and consumption are given in good faith and are "about" and are given without guarantee. They must not be used as basis for charterparties or contracts without owner's explicit written authority.