



Multipurpose Vessel Tweendecker

4.326 DWT/ 2 x 60 to

MV "BBC Romania"

MV "BBC Holland"

MV "Peter Rönna"



Ship's Basics

Builder	Rousse Shipyard, Bulgaria	
Delivery	MV "BBC Holland"	04/2002
	MV "Peter Rönna"	06/2002
	MV "BBC Romania"	11/2006
Type	Multipurpose Cargo Ship	
Classification	GL + 100 A5 E3 G + MC E3 AUT equipped for carriage of containers, grain and timber fitted, strengthened for heavy cargoes, SOLAS II - 2 Reg. 54 19 DBC	

Dimensions & Main Data

Tonnage	abt. 3.194 GT / 1.725 NT	
Deadweight	abt. 4.326 mt	
Length o.a.	abt. 98,90 m	
Length p.p.	abt. 92,80 m	
Beam	abt. 13,80 m	
Draft	abt. 5,74 m	
Height above keel	abt. 28,05 m	
Speed	abt. 13,5 kn always subject good weather conditions / bf 2 / no swell	
Consumption per day at sea	abt. 10,5 mt IFO 180 RME 25	
at port	abt. 1,2 mt MGO DMA with crane operations abt. 0,7 mt MGO DMA without crane operations	
Tank capacities		
IFO	abt. 275,0 cbm	
MDO	abt. 65,0 cbm	
Ballast	abt. 1.865,0 cbm	
Freshwater	abt. 42.0 cbm	

Engines

Main Engine	MaK 6M32C, 2.880 kW at 600 rpm
Aux.-Engines	2 x Caterpillar 174 kW at 1.500 rpm
Emergency generator	1 x Caterpillar 85 kW
Shaft generator	1 x AEM 328 kW
Bowthruster	Schottel STT 170-LK, fixed propeller, thrust 4.2 t
Specials	Controllable pitch propeller

Nautical Equipment / Communication

Fitted with all modern equipment / fully GMDSS fitted

Accommodation

10 persons, 10 cabins

Hatch and Hold

Number	1 Hold / 1 Hatch
Hatch cover type	11 panels lift away covers of pontoon type
Hold	70,35 m x 11,20 m x 8,45 m, mostly boxshaped
Hatch	70,35 m x 11,20 m, one movable beam
Grain / Bale Space	abt. 6.374 cbm (225.096 cbft)
IMO classes	all
Ventilation	6 airchanges per hour
Strength	
On tanktop	abt. 15,0 mt/sqm
On tdw	abt. 2,50 mt/sqm
On deck	abt. 1,65 mt/sqm
Tweendeck	one complete



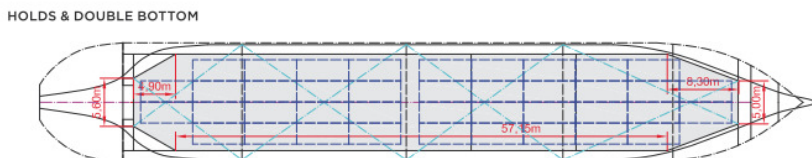
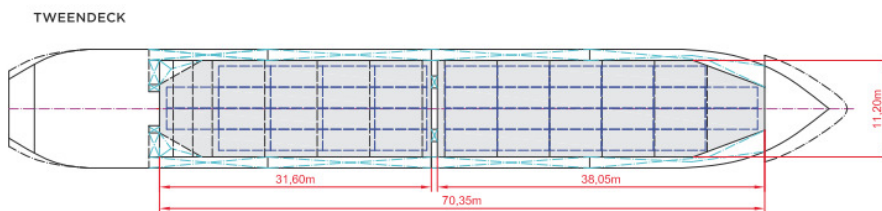
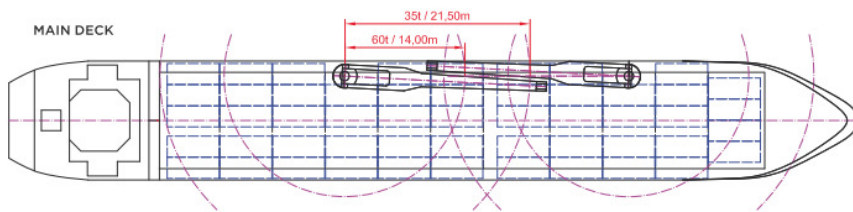
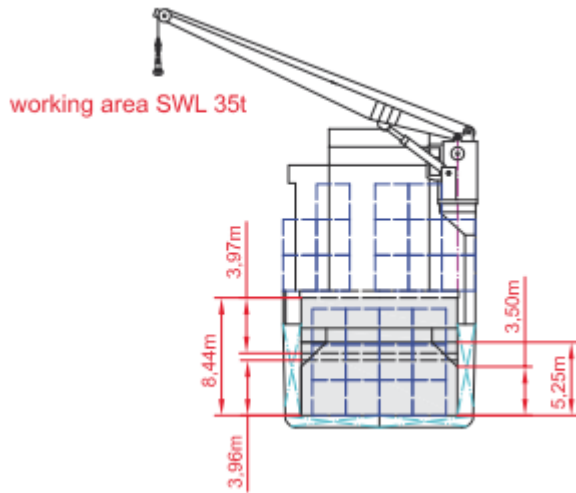
BRIESE SCHIFFFAHRT

Our Objective: Charterer's Happiness

Hafenstraße 12 • 26789 Leer • Germany / Tel.: +49 491 92520 0 • Fax: +49 491 92520 25 • info@briese.de

Bulkhead	2 pcs, movable Tweendeck pontoons can be used as bulkheads		
Container Capacity	20'	40'	20' ("BBC Romania")
Hold	154	67	18
Deck	120	48	24
Total	274	115	42
TEU at 14 to	152		
Reeferplugs	20 on deck ("BBC Romania": 40)		

Stackload	20'	40'
Hold	72 mt	91,5 mt
Deck	25 mt	32 mt
Cargo Gear		
Type	2 x NMF	
SWL	each 60 mt / 2.4 - 14.0 m; 35 mt / 14.0 - 21.5 m	
Combinable	120 mt	
Situated	portside	



All details believed to be correct but given without guarantee and they must not be used as basis for charterparties or contracts without owner's explicit written authority.