



3,200 DWT / gearless



BRIESE SCHIFFAHRT

Vessel name	Built	IMO no.	Flag
Barbarossa	12/1999	9197765	Gibraltar
Störtebeker	10/2000	9195377	Gibraltar

Vessel name	Built	IMO no.	Flag
Saxum	11/2000	9197818	Gibraltar

Ship's Basics

Type	General Cargo Vessel Tweendecker
Builder	Bodewes Volharding / Pattje, Netherlands
Classification	DNV GL +100 A5 E + MC E3 AUT, DBC, SOLAS II-2, Reg. 19, equipped for carriage of containers, strengthened for heavy cargo

Dimensions & Main Data

Tonnage GT/NT	2,301 / 1,289
Deadweight (summer)	3,200 mt (without tweendeck)
Length o.a.	82.50 m
Length p.p.	78.98 m
Beam	12.40 m
Max. draft (summer)	5.30 m
Max. speed	12.5 knots
Service speed	11.3 knots
Consumption at sea	6.2 mt fuel per day
Consumption in port	0.5 mt fuel per day
Fuel on ME	MGO DMA / MDO DMB
Fuel on AE	MGO DMA
Tank capacities	MGO DMA / MDO DMB abt. 217 cbm Ballast abt. 1,360 cbm Freshwater abt. 46 cbm

Propulsion

Main Engine	MaK 6M25, 1800 kW
Aux.-Engines	MAN, 2 x 115 kW
Propeller	Controllable pitch propeller

Hold and Hatch

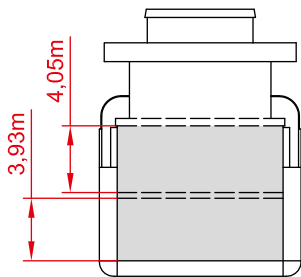
Hold and Hatch	1 Hold / 1 Hatch
Hatch cover type	Pontoon type
Cargo hold capacity	4,713 cbm (166,447 cbft)
Floor space under deck	1,026 sqm (11,026 sqft)
Floor space on deck	593 sqm (6,381 sqft)
Deck strengths per sqm	14.00 mt on tanktop 1.60 mt on tweendeck 2.50 mt on deck
Tweendeck	1 height
Bulkheads	2 bh / 7 positions

Container Capacity

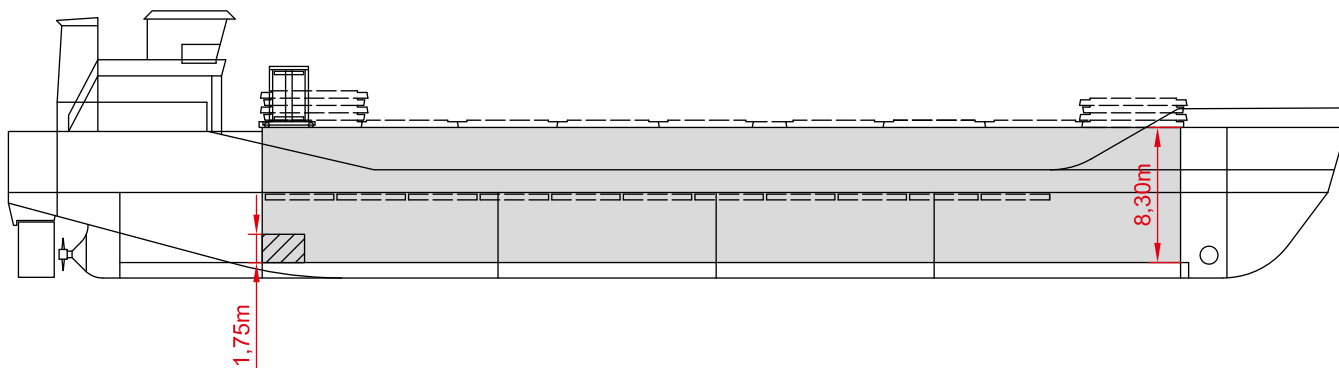
Capacity	20' or 40' + 20'
Hold	96 / 42 / 3
Deck	36 / 16 / 4
Total	132 / 58 / 7
TEU at 14 to	132
Reeferplugs	12 on deck
Stackload	20' / 40'
Tanktop	70 mt / 90 mt
Deck	24 mt / 40 mt

Special Equipment / Features

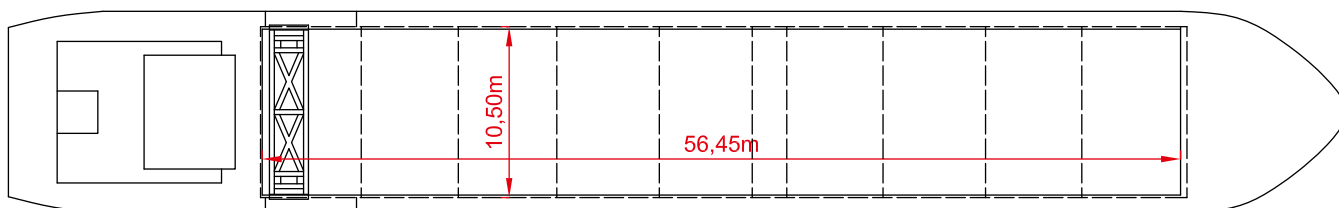
IMO classes	Fitted for carriage of dangerous goods of all IMO classes
Other	Bow thruster; Shaft Generator



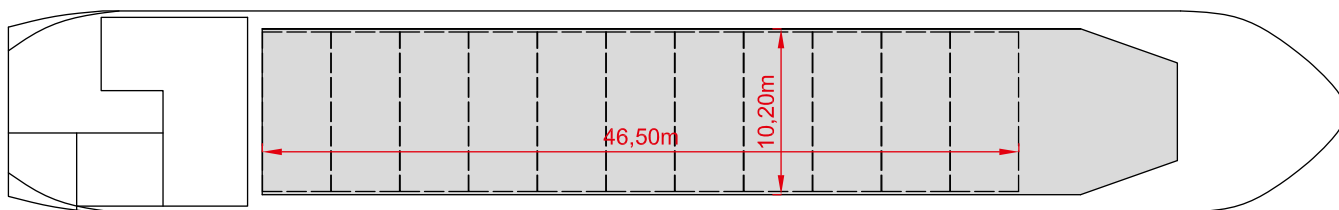
Side View



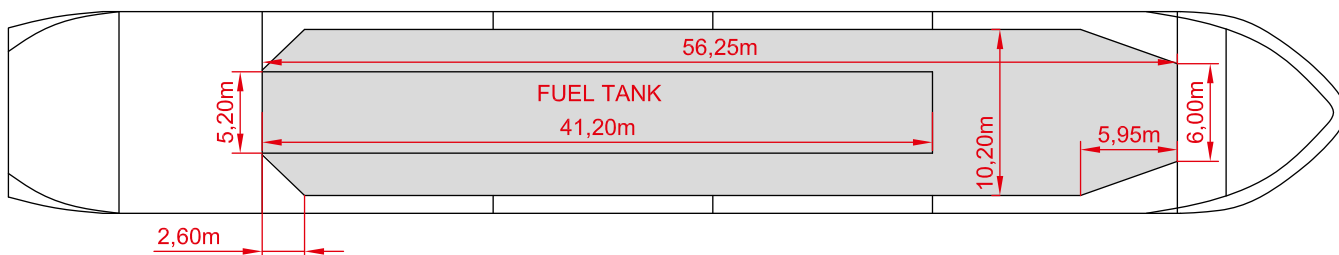
Main Deck



Twendeck



Hold & Double Bottom



Max. speed is calculated basis 85% MCR, ballast condition, no deck cargo, maximum Beaufort 2, no swell, no adverse currents, clean hull and even keel. Service Speed and consumption at sea is calculated basis 75% MCR, laden condition, no deck cargo, maximum Beaufort 2, no swell, no adverse currents, clean hull and even keel. Eco speed is the minimum continuous speed in laden condition. Consumption data assumes reefer plugs and shaft generator disconnected but including AE if no shaft generator is installed. Vessel is burning fuel according to ISO 8217. Intake is always subject to vessel's stability, trim, permissible weights and is subject to regulations of visibility. Lifting capacity of vessel's cranes is subject to vessel's stability and can depend on cargo/ ballast on board. Container data as well as bale capacity assumes tweendeck ashore. All details including speed and consumption are given in good faith and are "about" and are given without guarantee. They must not be used as basis for charterparties or contracts without owner's explicit written authority.